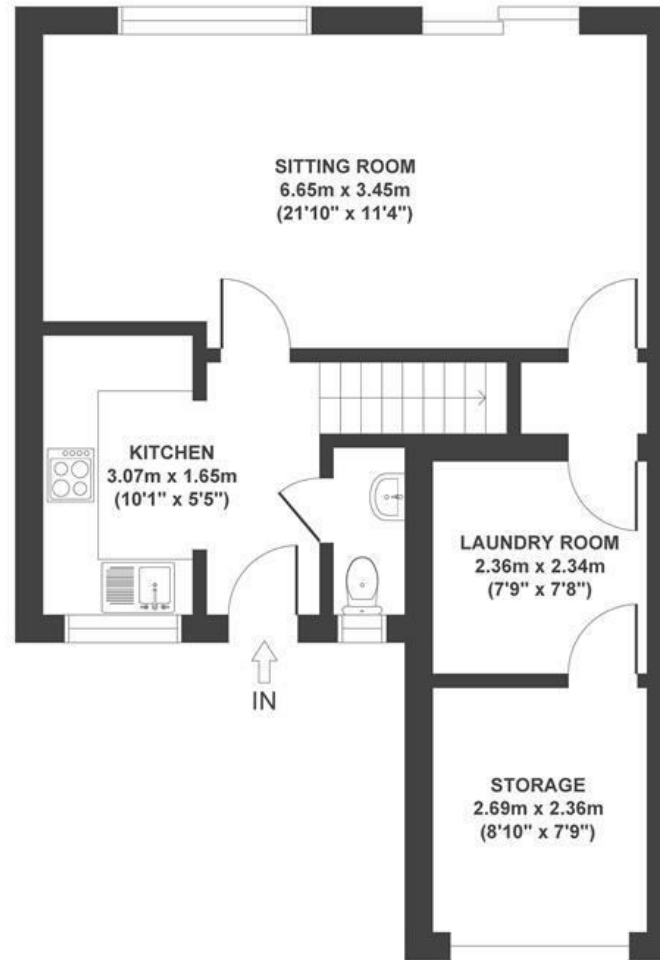


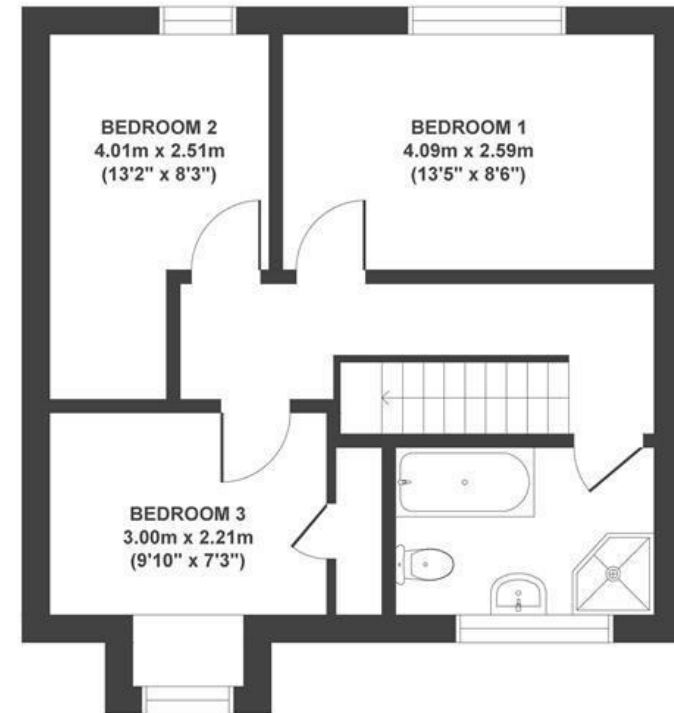
Concorde Drive

SOUTHMEAD

APPROXIMATE FLOOR AREA
94 SQM / 1012 SQFT



GROUND FLOOR



FIRST FLOOR

Boardwalk

Concorde Drive

SOUTHMEAD, BRISTOL



£340,000



3 Bedrooms



BS10 6PY



1 Bathrooms

"It's a cosy house, and so close to everything! The neighbours are wonderful and very friendly. It's five minutes walk to Badocks Woods which is a beautiful walking spot with a lovely stream, ideal for a dog walker."

